



ACADEMIC ADVISING



TEXAS A&M UNIVERSITY

Mays Business School

Word Cloud



TEXAS A&M
UNIVERSITY

As you come in, please fill out this word cloud and tell us where you're from!



Log in to TAMU_Wifi using your NetID and password

Your NetID is the first half of your TAMU email

For example: johndoe123@tamu.edu

NetID: johndoe123

Once you're connected to Wi-Fi, log into Howdy!

Meet Your Advisors



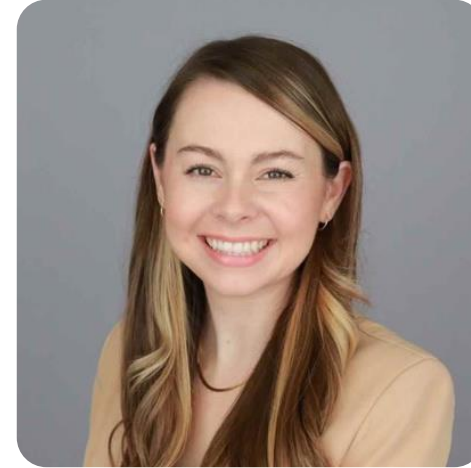
TEXAS A&M
UNIVERSITY



Sean Clifford



Emma Hammett



Brooke Kunzman



Isabella McAvoy



Mariah Torres

HOWDY!



TEXAS A&M
UNIVERSITY

- **Congrats on being accepted to Texas A&M & Mays Business School!**
 - **Take 5 minutes to share with your table...**
 - Your Name
 - Your Hometown
 - Something about your first year of college you're looking forward to
-

Kahoot!



TEXAS A&M
UNIVERSITY

<https://create.kahoot.it/share/tamu-nsc/b902b3b3-2b6c-4a67-b824-8d1a97d8a6b8>

Freshman Required Advising Fall 2024

To pre-register for all Spring 2025 courses, every freshman must meet with a Mays academic advisor.

September 9-October 30

A hold will be placed on the student's account preventing spring preregistration until the freshman has completed their required advising appointment.

Students should check their official TAMU email account inbox regularly for reminder emails about required advising.



Your Fall 2024 Schedule

Common Schedules



TEXAS A&M
UNIVERSITY

MATH 140	3
ECON 202 (CBK)	3
Creative Arts	3
BUSN 101 (CBK)	3

12 hours

MATH 140	3
ECON 202 (CBK)	3
Social & Behavioral Science	3
BUSN 101 (CBK)	3

12 hours

MATH 140	3
ECON 202 (CBK)	3
Life & Physical Science	3
BUSN 101 (CBK)	3

12 hours

Every student's schedule will be different. A 12-hour schedule is typical.

Optional Courses



TEXAS A&M
UNIVERSITY

- **ACCT 200 & FINC 210** are both one-hour courses designed to give students an introduction to career paths and explore your interest in either field.
 - These courses are not required during your first semester!
-

Upper-Level Requirements



TEXAS A&M
UNIVERSITY

The "Big 5"

Mathematics

MATH 140

**Mathematics
for Business
& Social
Sciences**

MATH 142

**Business
Calculus**

Lower-Level Core Business
Knowledge

ACCT 229

**Introductory
Accounting -
Financial**

ECON 202

**Principles of
Economics -
Microeconomics**

ECON 203

**Principles of
Economics -
Macroeconomics**

Upper-Level Business Majors



TEXAS A&M
UNIVERSITY

ACCT

Accounting

FINC

Finance

MGMT

Management

MKTG

Marketing

MISY

Management Information Systems

SCMT

Supply Chain Management

BHNR

Business Honors (by application only)

BUSI

Bachelor of Science in Business Administration

Math Requirements



TEXAS A&M
UNIVERSITY

MATHEMATICS

6 hours required

To satisfy the Mathematics core curriculum requirement, Bachelor of Business Administration (BBA) degree programs specifically require:

MATH 140

Mathematics for Business
& Social Sciences

and

MATH 142

Business Calculus

MATH 140 (Grade of 'C' or higher)
or minimum MPE score of 18 is required
to enroll in **MATH 142**.

Math Placement Exam (MPE)

- Your MPE score informs you and your academic advisor about which MATH course you are ready to enroll in for Fall 2024.
- *Does **NOT** award credit for any math course.*
- **You are required to take MATH 140 and MATH 142**
 - Even with a high MPE score
 - If credit has not already been earned via dual credit or AP Calculus exams.

Use Mays Student Handbook to select core curriculum electives.



Aggie Schedule Builder

DO NOT REGISTER FOR



TEXAS A&M
UNIVERSITY

- **M** sections
 - **200** sections – honors
 - **800** sections – remedial
 - **700** sections – distance education fee!
-

Core Curriculum Classes



TEXAS A&M
UNIVERSITY

Life and Physical Science

- **ATMO 201:** Weather and Climate
- **GEOG 203:** Planet Earth
- **GEOG 205:** Environmental Change
- **GEOL 101:** Principles of Geology
- **POSC 201:** General Avian Science

Language, Philosophy, & Culture

- **ANTH 205:** Peoples & Cultures of the World
- **GEOG 202:** Geography of the Global Village
- **GEOG 305:** Geography of Texas
- **HIST 104:** World History Since 1500

Social & Behavioral Science

- **SOCI 205:** Intro to Sociology
- **GEOG 201:** Intro to Human Geography
- **URPN 201:** The Evolving City
- **URPN 202:** Building Better Cities

This Afternoon



TEXAS A&M
UNIVERSITY

Lunch

- MSC or an off-campus location

Registration

- Arrive back in this room at 2:00. You'll Register at 2:30!
-